

EPR100 State-of-the-art RADAR

High resolution detector for outdoor perimeter security



Applications

- Airports - Perimeter intruder detection
- Railways - Trackside for public safety and security
- Military Bases - Hostile vehicle detection
- Industrial Sites - Intruder and trespasser detection
- Public Utilities - Asset protection and public safety
- Building Sites - Plant security and asset protection
- Private Property - Residential security and safety

EPR100 Perimeter Security Radar

- ▶ Detect up to 250m
- ▶ 360° Azimuth, 60° elevation
- ▶ Low power 2W
- ▶ Solid State; No moving parts
- ▶ All weather operation
- ▶ Fully integrated into SharpView

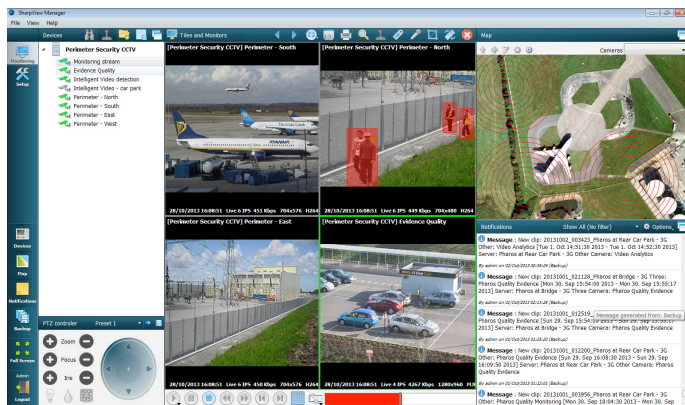
EPR100 is a state of the art RADAR which autonomously monitors, detects and alerts users of objects in protected regions. Ideally used around perimeters, EPR100 can detect objects in full 360°, up to 250m away (across flat terrain, no obstructions) with minimum false alarms.

EPR100 is a digital beam forming radar which operates in the license free 2.4GHz band with very low output power and poses no radiation hazard. Ideal for use in large outdoor spaces in any weather condition and under poor visibility.

The unit has an automated self test mechanism and easy to use web based control interface. With no moving parts, low cost and low power makes this an ideal detection device for a huge range of perimeter applications from large residences, military bases, solar farms and national borders.

Contact relay output allows triggering of lamps or other devices, RS422 interface streams data to any VMS or security management software. Microsoft .Net interface available for third party integration.

EPR100 provides real-time threat detection of moving objects in any weather condition



TECHNICAL SPECIFICATIONS EPR100

Sensor Type	High Resolution Digital Beam Forming RADAR
Frequency	2.4GHz Unlicensed band
Emitted Power	200mW
Detection Range	0 - 250m
Range Accuracy	0.2m at 100m
Target detection speed	< 0.1m/s
Scan Rate	1/s (2/s option available)
Scan Cover	360° Azimuth, 2° accuracy
Scan Elevation	60° from horizontal
Interface	RS422, Contact Relay
Operating Temp. Range	-20°C to +70°C
Power Supply	9-36VDC
Power consumption	2W at 12VDC
Dimensions	Ø 400mm, Height = 250mm
Weight	5.1kg
Environmental	IP65, FCC Part 15 / B, C. CE: EN60950-1, EN301489, EN6100-4-2, EN300440